

FINELINER MONO - A tribute to lovable limits

# The industrial engineer runs validated equipment in certified shifts at constant speed to maintain mechanic stability

## ABOUT

Machine engraved fonts, like those found in elevators or on outdoor signs, always intrigued me. The straightforward letter forms and fixed stroke width make them instant recognizable.

The same goes largely for monospaced typefaces with their forced glyph shapes and imperfect spacing. Well known from the typewriter era, today still seen on receipts, vouchers and tickets.

Over the years I started to appreciate the awkward, rigid look of both font classes. They embodied the struggle to create type within strict design boundaries.

Fineliner Mono is all about combining the defining characteristics of monolined and monospaced fonts. The result is a vaguely familiar but truly unique typeface.

abcdefghijklmnopqrstuvwxyz  
 ABCDEFGHIJKLMNOPQRSTUVWXYZ  
 1234567890

## FEATURES

AUTHENTIC  
 Monoline + monospace

COMPACT  
 Semi condensed & low descenders

## DESIGN

Entirely constructed out of lines and circles

Naive look based on a plethora of anonymous engraved and receipt fonts found in the wild

## FAMILY PLANNING

Light, Regular and Medium  
 Optical corrected obliques

NERD ALERT  
 All font metrics  
 can be divided by  
 the number 7

## WATERFALL

7pt	hamburgetonstiv
8pt	hamburgetonstiv
9pt	hamburgetonstiv
10pt	hamburgetonstiv
11pt	hamburgetonstiv
12pt	hamburgetonstiv
13pt	hamburgetonstiv
14pt	hamburgetonstiv

## GLYPH PARADE

Money ..... \$ 7.50  
 Change \_\_\_\_\_ € 12,34  
 6% discount  
 <b>bold</b>  
 [u]underline[/u]  
 /\* Code comment \*/  
 #hashtag  
 Why? Because!  
 ~~~ +++ --- ===  
 @font-face  
 "Hello world"  
 žàïôé  
 8 + (9 / 3) = 11  
 & -> ampersand  
 >\_< \_- ^ ^  
 Quote 'me' \_

# The industrial engineer runs validated equipment in certified shifts at constant speed to maintain mechanic stability

## ABOUT

Machine engraved fonts, like those found in elevators or on outdoor signs, always intrigued me. The straightforward letter forms and fixed stroke width make them instant recognizable.

The same goes largely for monospaced typefaces with their forced glyph shapes and imperfect spacing. Well known from the typewriter era, today still seen on receipts, vouchers and tickets.

Over the years I started to appreciate the awkward, rigid look of both font classes. They embodied the struggle to create type within strict design boundaries.

Fineliner Mono is all about combining the defining characteristics of monolined and monospaced fonts. The result is a vaguely familiar but truly unique typeface.

abcdefghijklmnopqrstuvwxyz  
ABCDEFGHIJKLMNOPQRSTUVWXYZ  
1234567890

## FEATURES

AUTHENTIC  
Monoline + monospace

COMPACT  
Semi condensed & low descenders

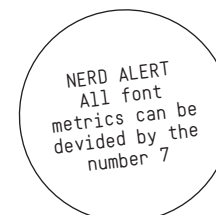
## DESIGN

Entirely constructed out of lines and circles

Naive look based on a plethora of anonymous engraved and receipt fonts found in the wild

## FAMILY PLANNING

Light, Regular and Medium  
Optical corrected obliques



## WATERFALL

|      |                 |
|------|-----------------|
| 7pt  | hamburgefonstiv |
| 8pt  | hamburgefonstiv |
| 9pt  | hamburgefonstiv |
| 10pt | hamburgefonstiv |
| 11pt | hamburgefonstiv |
| 12pt | hamburgefonstiv |
| 13pt | hamburgefonstiv |
| 14pt | hamburgefonstiv |

## GLYPH PARADE

Money ..... \$ 7.50  
Change \_\_\_\_\_ € 12,34  
6% discount  
<b>bold</b>  
[u]underline[/u]  
/\* Code comment \*/  
#hashtag  
Why? Because!  
~~~ +++ --- ===  
@font-face  
"Hello world"  
žàïôé  
8 + (9 / 3) = 11  
&amp; -> ampersand  
>\_< \_- ^ ^  
Quote 'me' \_

|   |   |   |   |   |    |   |   |   |   |   |   |   |   |   |   |
|---|---|---|---|---|----|---|---|---|---|---|---|---|---|---|---|
|   |   | ! | " | # | \$ | % | & | ' | ( | ) | * | + | , | - | . |
| / | 0 | 1 | 2 | 3 | 4  | 5 | 6 | 7 | 8 | 9 | : | ; | < | = | > |
| ? | @ | A | B | C | D  | E | F | G | H | I | J | K | L | M | N |
| O | P | Q | R | S | T  | U | V | W | X | Y | Z | [ | \ | ] | ^ |
| — | ' | a | b | c | d  | e | f | g | h | i | j | k | l | m | n |
| o | p | q | r | s | t  | u | v | w | x | y | z | { |   | } | ~ |
| ' | " | _ | " | ` | ´  | ^ | ¨ | ˇ | Ø | ø | Á | Â | Ä | À | É |
| Ê | Ë | È | Í | Î | Ï  | Ì | Ó | Ô | Ö | Ò | Š | Ú | Û | Ü | Ù |
| Ý | ÿ | Ž | á | â | ä  | à | é | ê | ë | è | í | î | ï | ì | ó |
| ô | ö | ò | š | ú | û  | ü | ù | ý | ÿ | ž | € |   |   |   |   |